



the KEY place

tenerife!
film commission

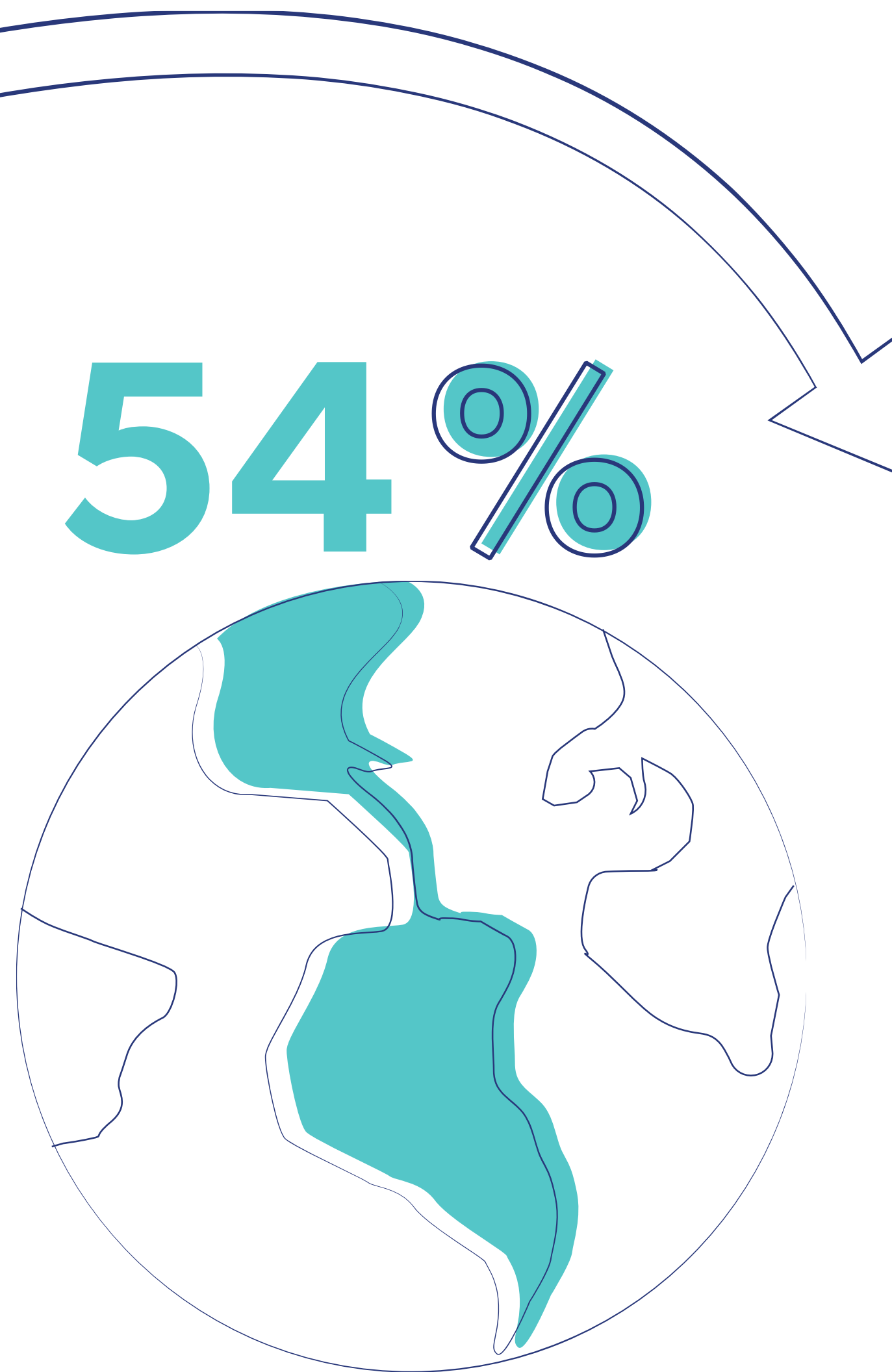


ISLA
CARTOON



- **50-45%**
Tax Incentives
- **Consolidated**
Industry
- **Work-Life**
balance
- **4% Corporate**
Tax ZEC
- **Top IT Infrastructure**
and connectivity
- **Institutional**
support
- **Specific events**
- **Training**
programmes





50-45% CASH-BACK

ON EXPENSES FOR INTERNATIONAL PRODUCTIONS ^{1&2}

- 50% tax rebate for the first million € of eligible expenditure in the Canaries. **54%** on the first million euros when expenses in the Canaries exceed 1,800,000€
- 45% for the rest of the eligible expenditure in the Canaries
- Service production company must be tax resident in the Canary Islands
- Minimum total budget: **2,000,000€**
- Minimum expenditure in the Canary Islands: **200,000€**
- Qualifying expenditure in the Canary Islands directly related to production:
 - Creative crew with residence in ECC
 - Expenditure on technical industries and other suppliers
- Cultural Certificate, acknowledgement in credit titles and delivery of promotional material are required
- Maximum cash-back: **36 million € for feature films and 18 million € per episode for series**
- 0% VAT ³ applicable

1: Art. 36.2 Law 27/2014, 27th November, Corporate Income

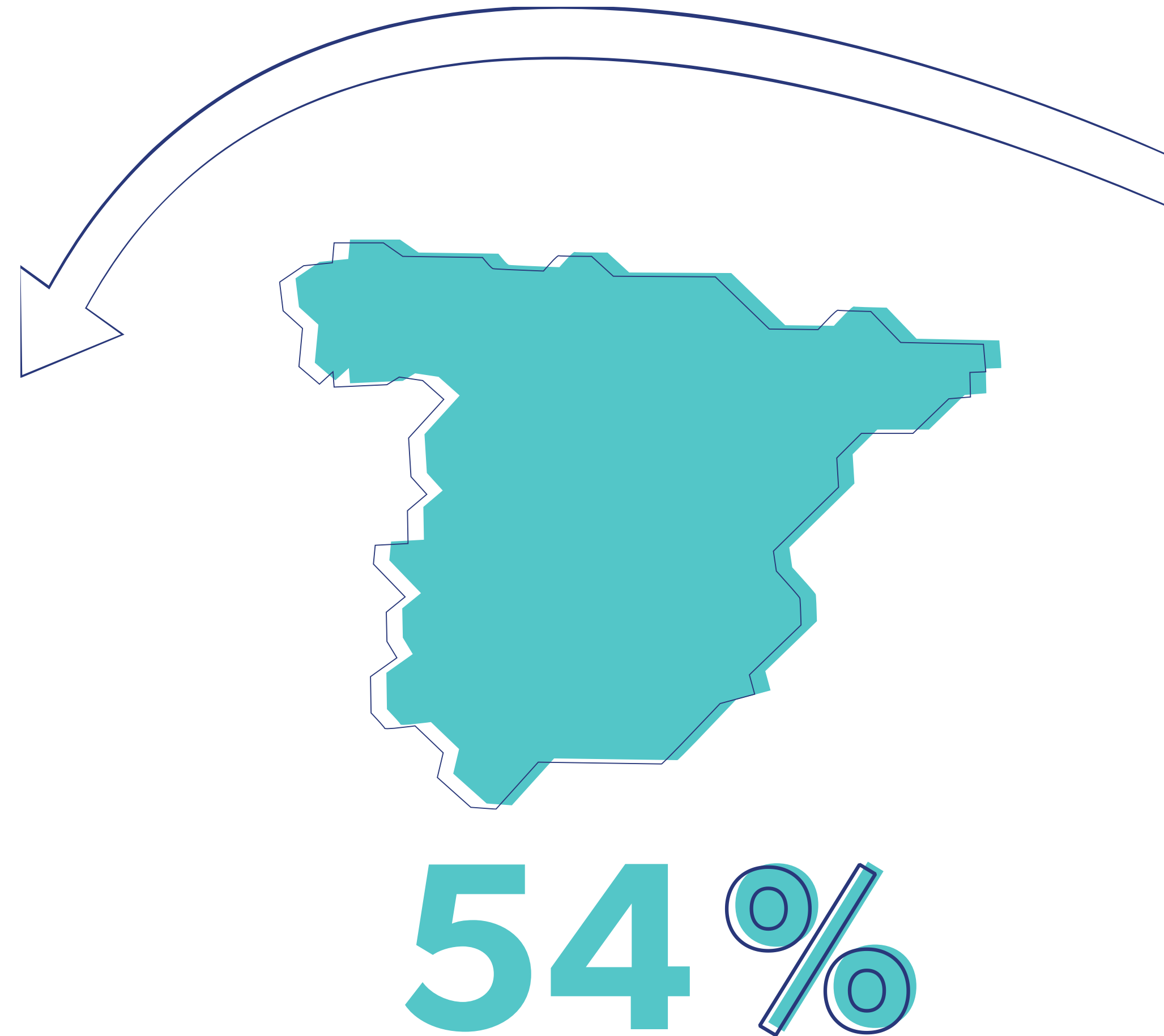
2: Law 20/1991, 7th June, amending Tax Aspects of the Canary Islands Economic and Fiscal Regime (article 94) and Law 19/1994, 6th July, amending the Canary Islands Economic and Fiscal Regime (consolidated text). (Disposición adicional 14^a)

3: Order, 23rd May 2017 about IGIC for audiovisual productions

50-45% tax credit

FOR NATIONAL PRODUCTIONS AND COPRODUCTIONS^{1&2}

- Spanish coproducer must be tax resident in the Canary Islands
- **No minimum Budget**
- **No minimum expenditure**
- **50% tax credit** for the first million € of the Spanish budget.
 - **54% tax credit** is available for certain productions
- **45%** for the rest of the Spanish production budget
- Maximum tax credit **36 million € for feature films and 18 million € per episode for series**
- Canarian Certificate of Audiovisual Production, Spanish Nationality and cultural test are required
 - **20% production time** spent locally for budget under **5 million €** and **15%** for budgets over **5 million €**
 - Hiring local professional whose tax residency is in the Canary Islands. At least a head of team, failing that, an animation lead, senior animator or dubbing actor of leading or supporting role 3



1: Art. 36.1 Law 27/2014, 27th November, Corporate Income (consolidated text)

2: Law 20/1991, 7th June, amending Tax Aspects of the Canary Islands Economic and Fiscal Regime (article 94) and Law 19/1994, 6th July, amending the Canary Islands Economic and Fiscal Regime (consolidated text). (Disposición adicional 14ª)

3. DECREE 88/2019, of 22 May, that modifies Decree 18/2009, of 10 February, which creates the Canary Islands Registry of Audiovisual Companies and Works and governs the procedure to obtain the Canarian Audiovisual Work Certificate.

DECREE 18/2009, of 10 February, that creates the Canary Islands Registry of Audiovisual Companies and Works and governs the procedure to obtain the Canarian Audiovisual Work Certificate regarding feature films and short films and fiction series, animation or documentaries produced in the Canary Islands.

4% Corporate Income Tax

FOR NEW ZEC COMPANIES ⁴

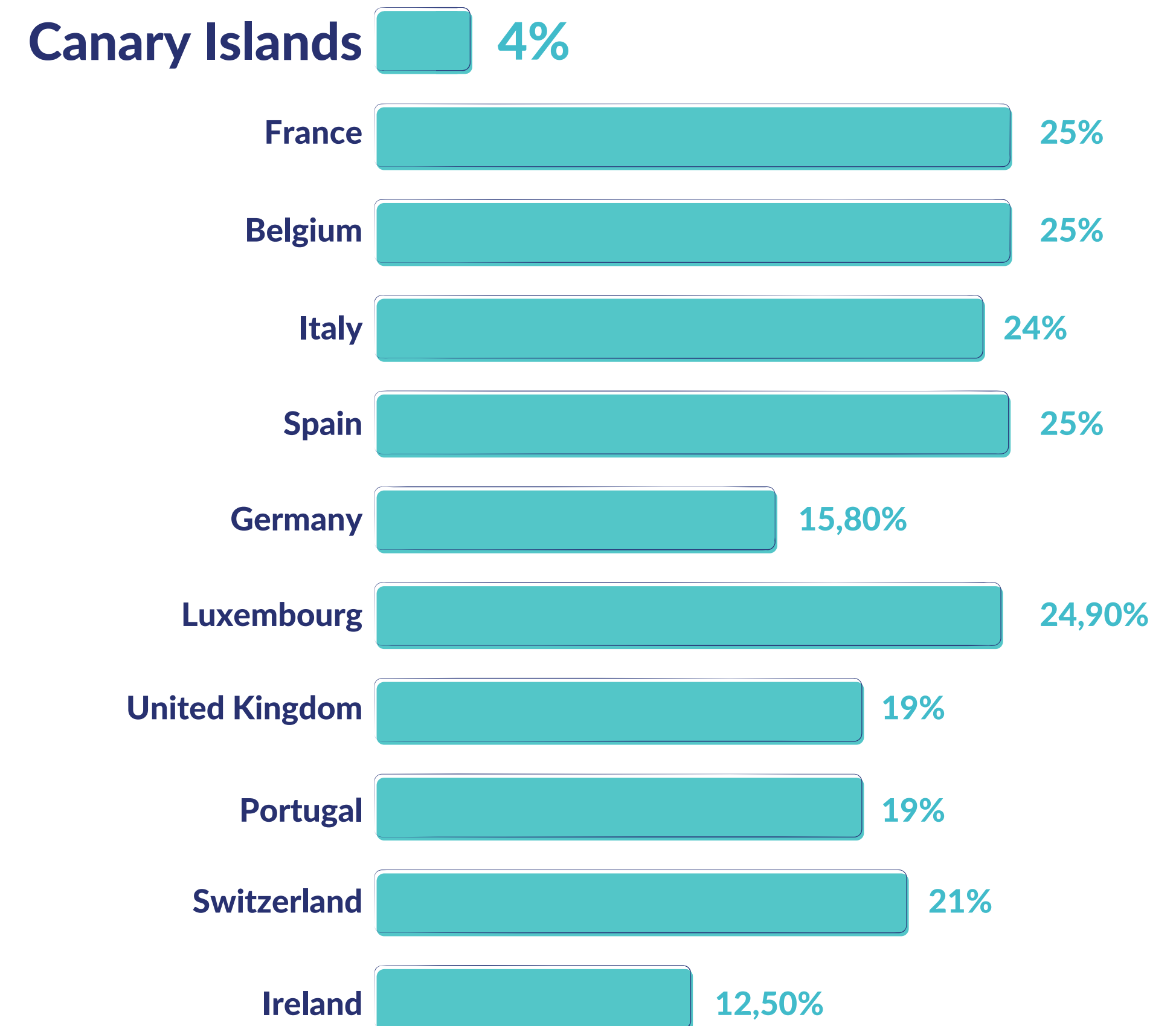
Companies are subject to a permanent, reduced 4% Corporate Income Tax in the Canary Islands.

50-45% tax incentives are compatible with 4% Corporate Income Tax

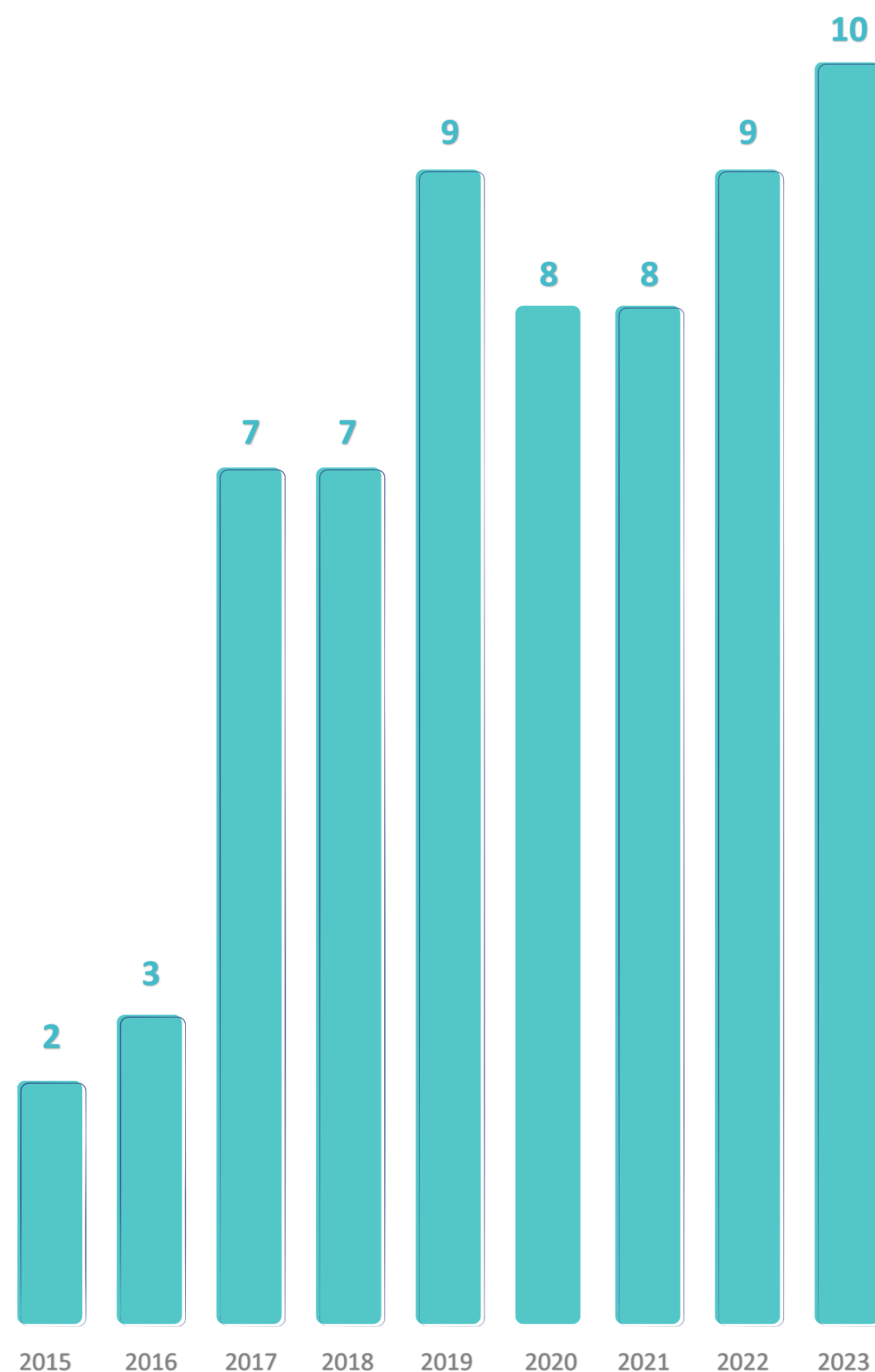
Requirements:

- Create a new company
- One-time minimum investment of 100,000 € in fixed assets within first two years. . Most of the activities related to the audiovisual sector will be exempted from this requirement as long as 6 jobs are created
- Creation of 5 full-time jobs within first six months of activity
- Keep a yearly employment average of 5 full-time Jobs
- At least one of the administrators must be tax resident in the Canary Islands
- The company needs to be authorized prior to set up

Corporate Taxes in other European countries



4: Law 19/1994, 6th July, amending the Canary Islands Economic and Fiscal Regime (consolidated text).



The numbers correspond to "number of animation production studios".

Consolidated Industry Sector

2D

2D Studios:

Atlantis Animation, La Casa Animada, La Crème Films, Lann Estudio Creativo, Glaboo Studios, Mondo TV Studios and Tomavision

3D

3D Studios:

3 Doubles Producciones, Atlantis Animation, B-Water Studios, La Crème Films, Mondo TV Studios, People Moving Pixels and Tomavision

WORKFORCE OF 400 PEOPLE

Relevant Productions

- **SPACE JAM, A NEW LEGACY** | Feature Film | Traditional Animation
- **MIRACULOUS LADYBUG S5** | Series | 3D
- **TALKING TOM & FRIENDS S4** | Series | 3D
- **TARA DUNCAN** | Series | CGI
- **SUPERKLAUS** | Feature Film | CGI
- **MY FAIRY TROUBLEMAKER** | Feature Film | CGI
- **PETTSON AND FINDUS S3 & S4** | Series | 3D
- **THE BEAT BUDS. LET'S JAM** | Series| 2D
- **INSPECTOR SUN & THE CURSE OF THE BLACK WIDOW** | Feature Film | CGI
- **TAD, THE LOST EXPLORER, AND THE SECRET OF KING MIDAS** | Feature Film | 3D
- **GRISÙ** | Series | 3D
- **TULIPOP S2** | Series | 2D
- **DIDDL** | Short Film | 3D
- **FINA & THE YOMIS** | Short Film | 3D
- **METEOHEROES S1 & 2** | Series | 2D
- **AGENT 203** | Series | 3D



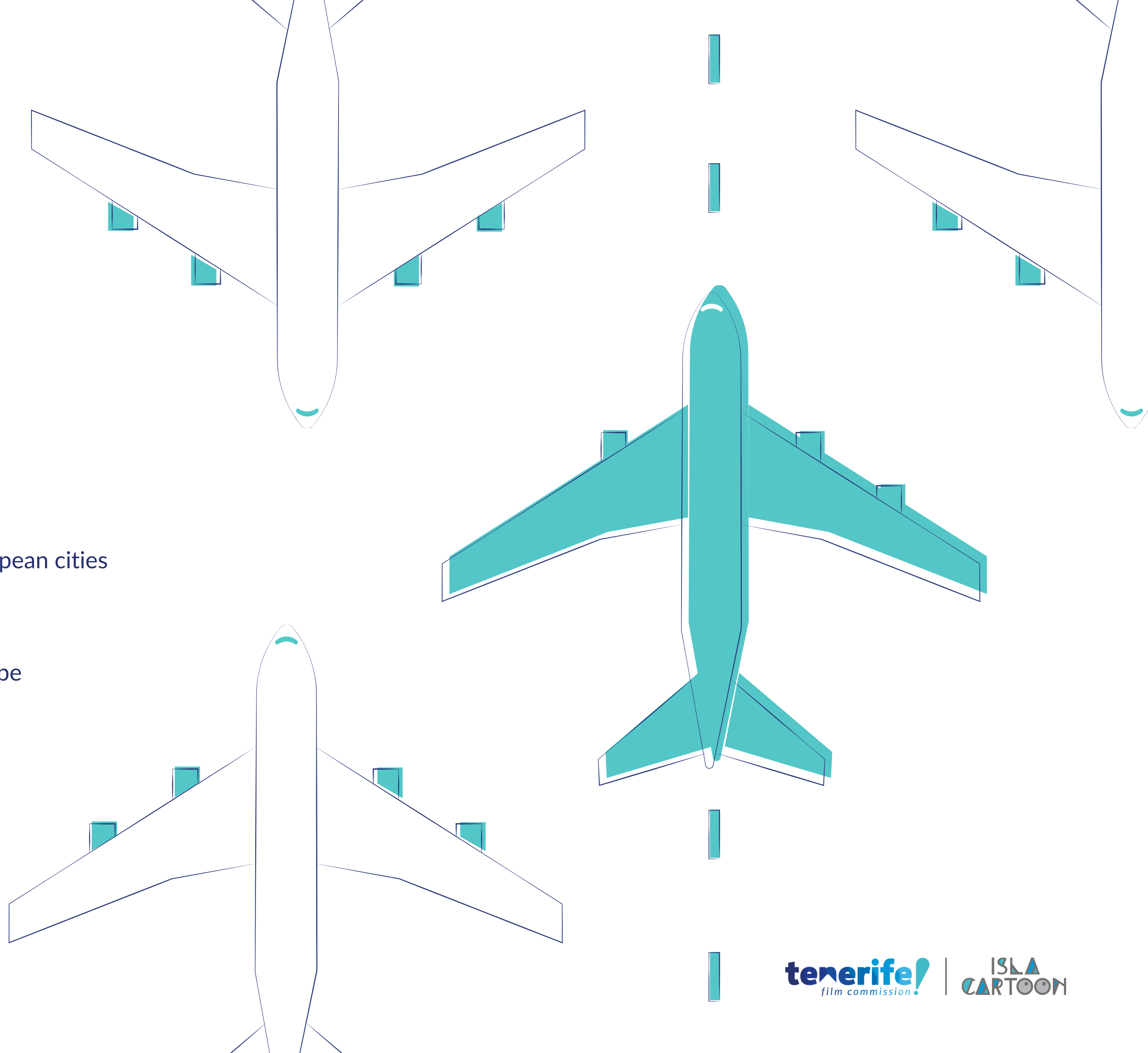
Top Tier IT Infrastructure and great data connectivity

- **Fibre Optic**, high speed internet connection everywhere
- **TEIDE HPC Supercomputer** optimized for rendering
- **6 Submarine internet cables** linking Tenerife with the European Continent

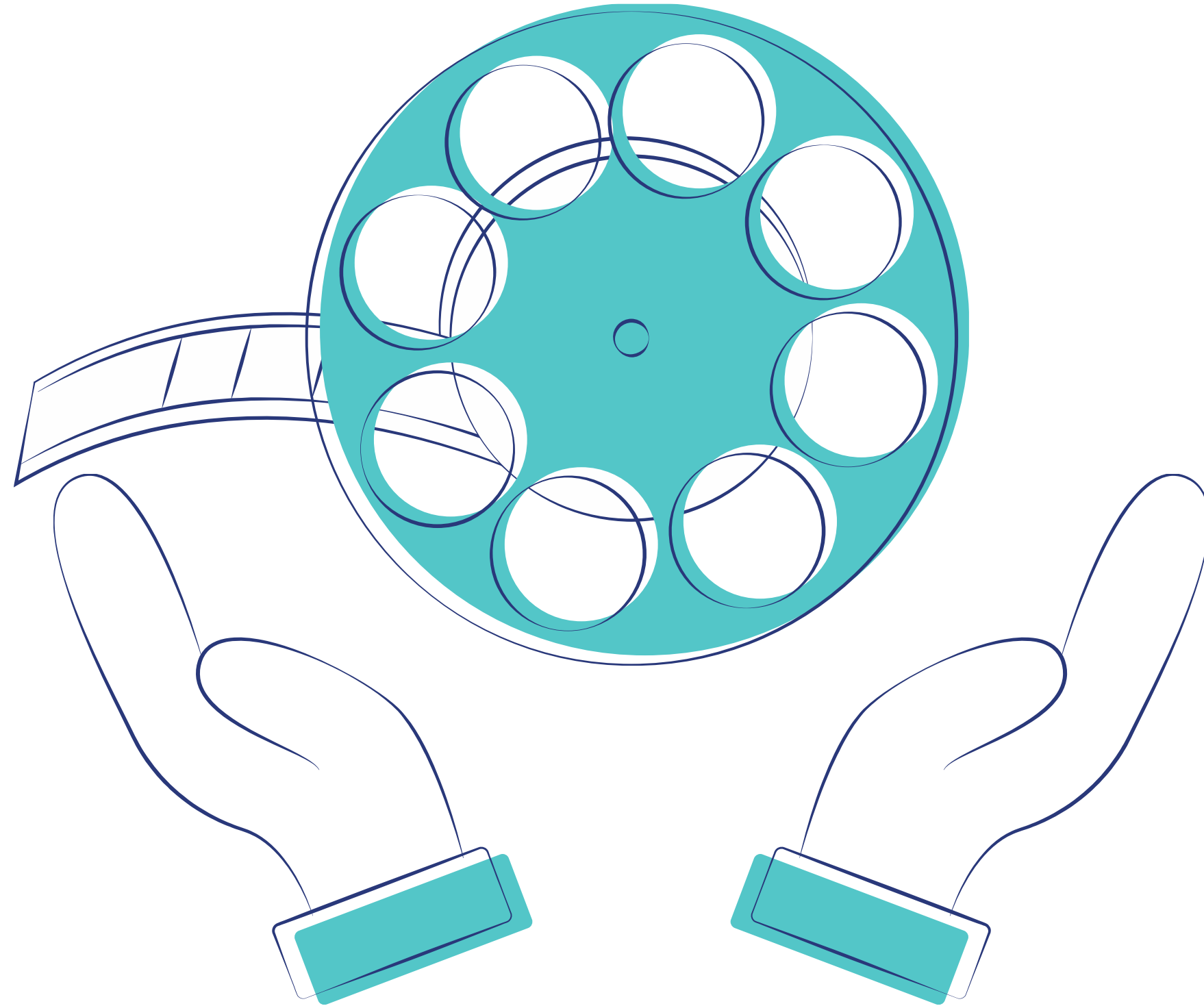


Great Flight connectivity

- Two international airports
- Connected with **141 destinations** including main European cities
- **Daily flights** to Madrid, Barcelona & London
- Between **2 and 4 hour flight** to rest of Spain and Europe



Dedicated institutional support



- Public and private **training programme**
- **Public employment aid programmes**
- **Inspection visits available**
- Active participation of the Tenerife Film Commission in **major international animation events** (Cartoon, Annecy, MIPCOM...)
- Aids and subsidies for the development and production of audio-visual works from Cabildo de Tenerife and the Canary Islands Government

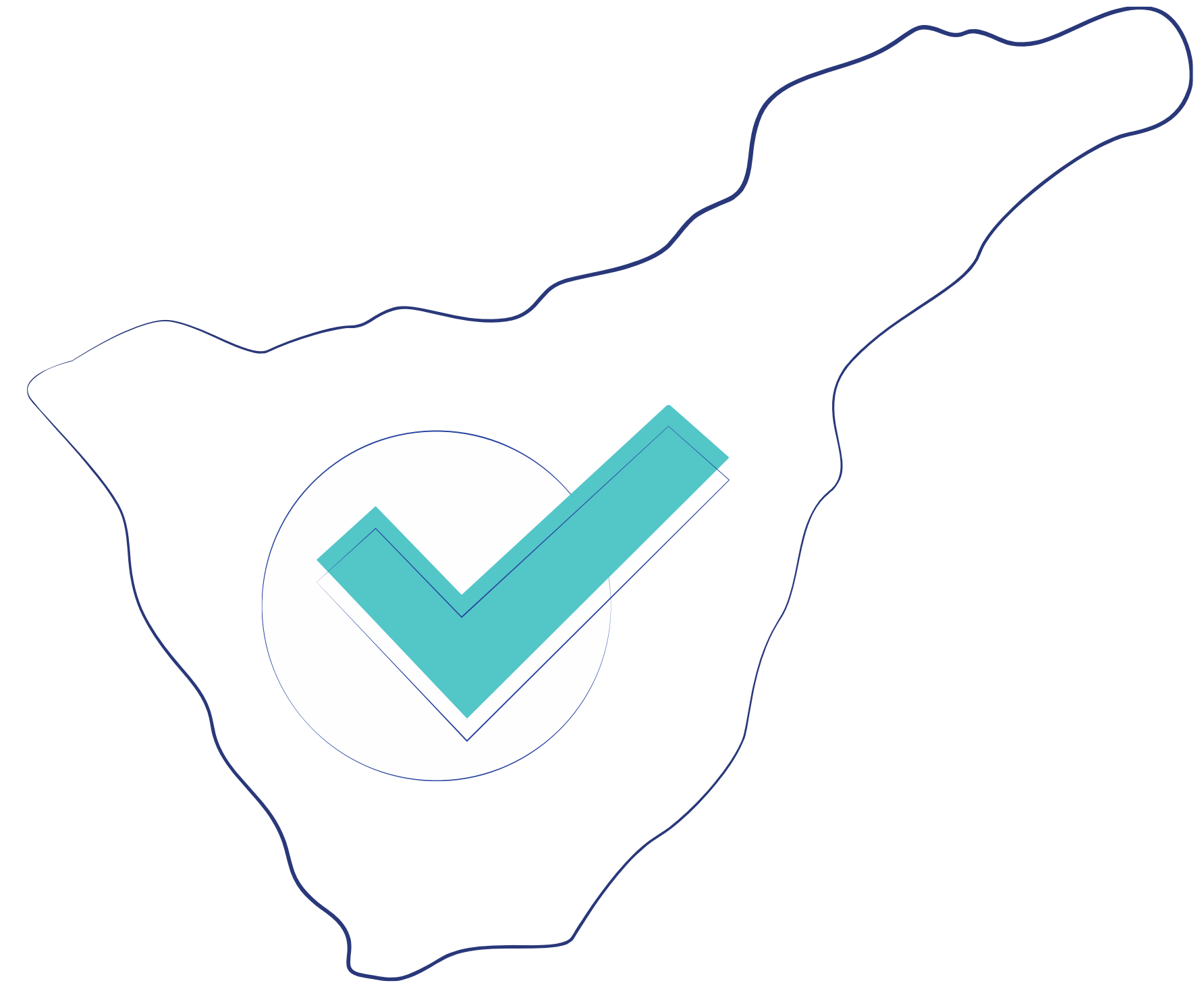
Sector-specific events

- Tenerife hosts [Iberoamerican Animation Quirino Awards](#)
- [Anidoc Sur](#) at [Miradas Doc](#)



Work-life balance

- 23°C average annual temperatura
- Affordable housing and school prices
- Competitive salaries
- 2,034 km² of which 48% are Nature Reserves
- Two World Heritage sites on Tenerife
- Outdoor activities possible all year-round
- Office areas within walking distance from main residential areas



Animation studios

3 DOUBLES
PRODUCCIONES



Portfolio

- INSPECTOR SUN & THE CURSE OF THE BLACK WIDOW | 2022 | Feature Film | CGI | Service
- MIA & ME: THE HERO OF CENTOPIA | 2022 | Feature Film |CGI | Service.
- MY FAIRY TROUBLEMAKER | 2022 | Feature Film | CGI |Service.
- ARPO THE ROBOT | 2019-2023 | Series | CGI |Service.
- MOMOSTERS | 2019 -2023| CGI | Coproducción.

In production

- QUIXOTES, THE HEIRS OF LA MANCHA | 2023 | Featured Film | CGI | Service.
- SUPERKLAUS| 2023 | Featured Film | CGI | Coproduction.
- 200% WOLF | 2023| Featured Film | CGI| Service
- THE PROUD PRINCESS | 2024 | Featured Film | CGI | Service

In development

- MR. LONELY | 2025 | Feature Film| CGI |Coproduction

T. +34 922 899 724 | info@3doubles.com
www.3doubles.com

ATLANTIS
ANIMATION



Portfolio

- TARA DUNCAN | 2021 | Series | Full CGI

In production

- MIRACULOUS LADYBUG T5 | 2023 | Series | Full CGI
- SONY / MESSI | 2023| Tráiler | Full CGI

T. +34 922 273 859 | contact@atlantisanimation.com
atlantisanimation.com

B-WATER
STUDIOS



Portfolio

- FINA & THE YOMIS | Short Film | 3D
- MAVKA. THE FOREST SONG | Movie | Service
- ALIEN & CAVE BOY TRAVEL TO LIGH | 2021 – 2022 | Dome Film 3D
- TREASURE TREKKERS S1 & 2 | 2020 – 2021 | Webisodes | 3D | Hybrid Pipeline
- PETTSON AND FINDUS | 2020-2021 | Series | 3D with 2D look
- CONNI | 2018 – 2020 | Feature Film | 3D with 2D look
- DIDDLE – ZAPPING | 2018 | Short Film | 8' | 3D
- ZAFARI | 2016 – 2017 | Series | 3D | Hybrid Pipeline

In production

- GHOST OF RUINS | 2023 | Series | 3D Look 2D Blender
- KAYARA | 2023 | Film | 3D Blender

In development

- NORMAN'S ISLAND | Serie | 3D

T. +34 609 490 332 | ag@b-waterstudios.com
www.b-waterstudios.com

Animation Studios

LA CRÉME FILMS



Portfolio

- DUNKELSTAD2019 | Credit titles for this ZDF Neo TV series | 2D
- CONTROL DE CARRETERAS2019 | Opener for this D MAX TV programme | 2D
- EL TURISTA2019 | Opener for this FOX TV programme | 2D
- CONTROL DE FRONTERAS | 2019 | Opener for this Discovery TV programme | 2D

T. +34 922 825 206 | info@lacremefilms.com
www.lacremefilms.com

GLABOO STUDIOS



In production

- MAGIA CON LU & POH | 2023 | Series | Preschool | 2D
- CUATRO ESTACIONES | 2023 | Series | Preschool | 2D

In development

- MAGNUS | 2024 | Film | Adults | 2D

T. +34 636 830 957 | admin@glaboo.com
www.glaboo.com

MONDO TV STUDIOS



Portfolio

- METEOHEROES S 1 & 2 | 2020-2022 | Series | 2D
- GRISÙ | 2022 | Series | 3D CGI
- AGENT 203 | 2022 | Series | 3D CGI
- ONE LOVE | 2022 | Series | 2D
- DISCO DRAGON | 2021 | Series | 2D
- NINA & OLGA | 2021 | Series | 2D
- ROBOT TRAINS S3 | 2021 | Series | 3D CGI
- BAT PAT 2 | 2019 | Series | 2D 2022

In production

- ANNIE & CAROLA | 2023 | Series | 2D
- LETRABOTS | 2023 | Series | 2D

T. +34 922 532 481 | info@mondotvstudios.com
www.mondotvstudios.com

Animation Studios

TOMAVISION



Portfolio

- SPACE JAM, A NEW LEGACY | 2021 | Traditional animation | Feature film | Service
- THE BEAT BUDS, LET'S JAM! | 2021 | 2D | Series | Service
- THE BOB'S BURGERS MOVIE | 2021 | Traditional animation | Series | Service
- TALENT EXPLORERS | 2020 | 3D | Series | Service
- STAR BRIGHT | 2019 | 2D | Short film | Service & Co-production
- EMMY & GOORO S 1 & 2 | 2019 | 2D | Series | Season 1 & 2 | Service & Co-production

In production

- TULIPOP S2 | 2023 | 2D | Series | | Service

In development

- FURRYTALES | 2023 | Film| 3D

T. +34 922 928 748 | hola@tomavision.net
www.tomavision.net

Consultancy

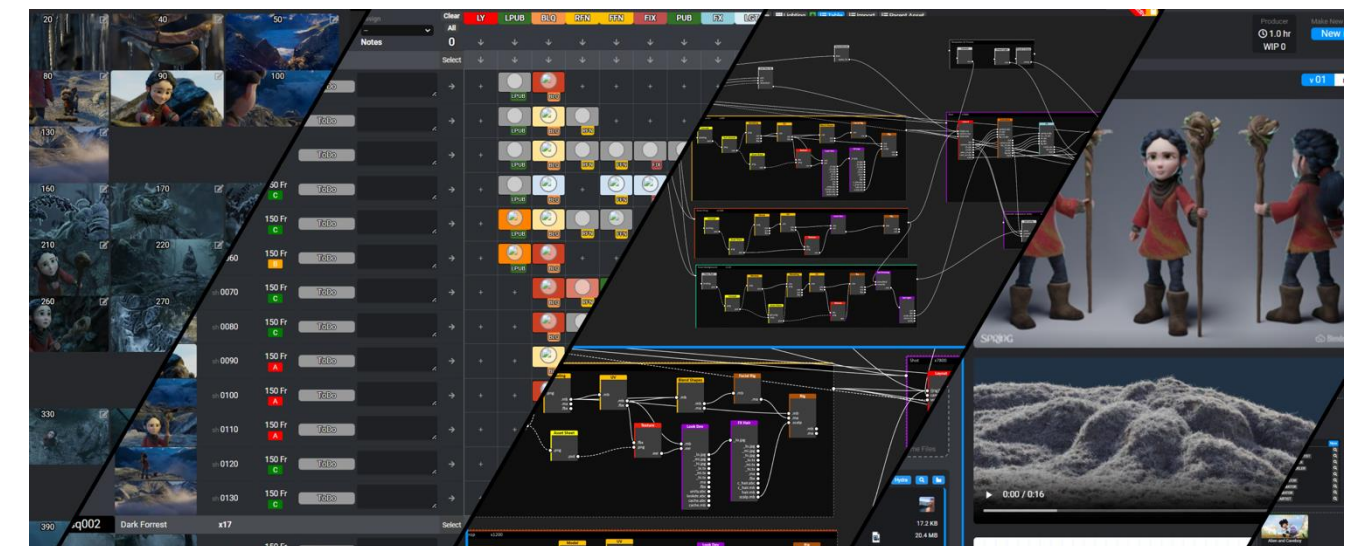
ATLANTIC ZONE



T. +34 0034 657 956 544 | v@strategic.zone

Consultancy

PIPELINE PRO



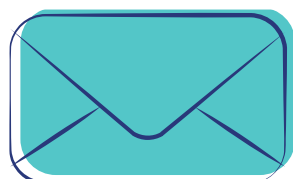
T. +34 0034 699 451 929 | Info@PipelinePro.io
www.pipelinepro.io



the KEY place

tenerife!
film commission

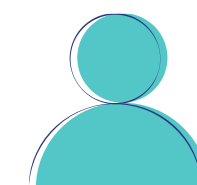
ISLA
CARTOON



film@webtenerife.com



T+ 34 647 34 64 62



tenerifefilm.com/animation